



KATHLEEN EWING'S SALON

By John Blee

Kathleen Ewing has moved to a new space on P Street (1767 P Street NW, Wed. – Sat. 11 – 6) where she presides over a salon style space. Ewing says, “I love it, I think people walking in feel they are walking into a home rather than a sterile environment. Being an art dealer is a very personal kind of business reflected in the intimacy of this place.”

Currently on view in an exhibition entitled “Director’s Choice” (through May 31) is a wide spectrum of high quality photography. Ewing is considered to be one of the best in the business, and the proof is on the walls. There are vintage estate pieces including Jacques-Henri Lartigue and August Sander that are amazingly fresh. The Lartigue is later than his more familiar work of antic play, it is an almost iconic head of a woman from 1930 looking very much of the period. There are three Sanders with a large print of “Girl in Fairground Caravan” that is haunting.

Notable is the work of Willy Ronis, a French photographer with his “Cave du Vieux Colombier, Paris” evoking a romantic, if somewhat frenetic dance hall. Also the photo-gravure by George Seeley, who was connected to Alfred Stieglitz, of a woman in a hazy, dreamlike light stands out. There is a wonderful portrait of Marlene Dietrich in a large hat by an unknown photographer that is charming.

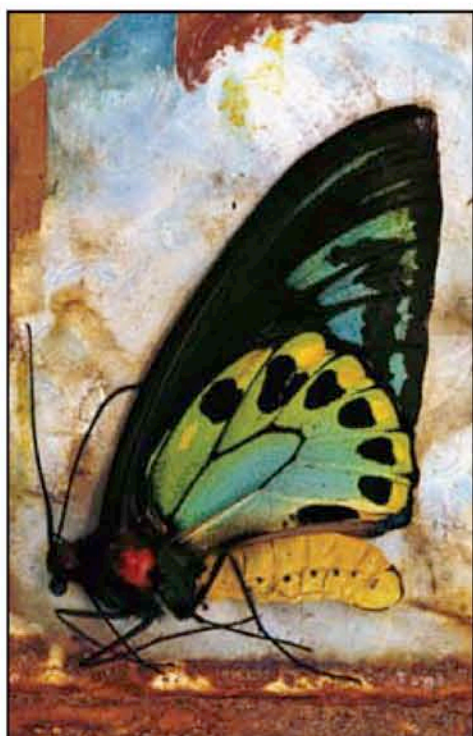
Frank Diperna in “From Italy Series” has caught the winding aspect of landscape found in the Italian hills in a wonderful view. Rajesh Nair captures a hillside Tibetan-style building in one of the prints from his Bhutan series. It is literally a cliff-hanger. Joan Myers in “Elephant Island, Antarctica” captures a totality that is amazing. And Benjamin Tankersley makes suburbia (“Boynton Beach, Florida”) look glamorous.

It is the nude that captures Claudio Vazquez, and in toned gelatin silver prints he makes erotic visual poems.

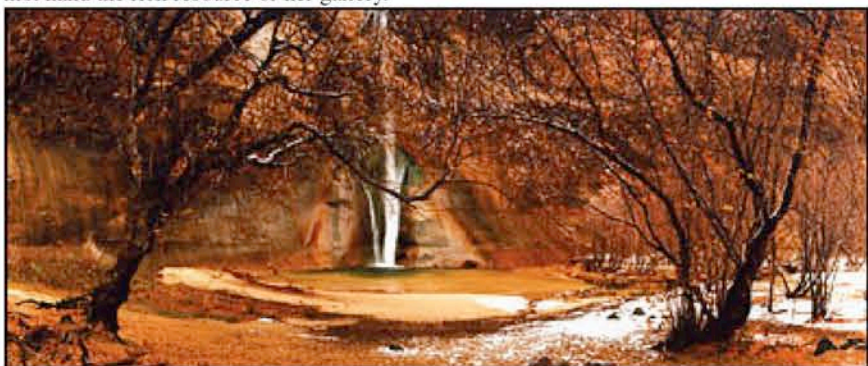
Kathleen Ewing declares that the internet is playing a bigger role in sales with people finding her there, and then developing into regular clients. Ewing says “I develop a dialogue with the client, sending them jpegs and learn their predilection whether for still life or industrial landscape.” Meanwhile we who live in DC can enjoy first hand the rich resource of her gallery.



*John Grant
Red Tulip and Bud*



*Rosamond Purcell
Birdwing Butterfly from Papua, New Guinea
1991 Iris print-Singer Editions, 16 x 20”*



*MacDuff Everton
Calf Creek Falls, Escalante Grand Staircase Nat'l Monument, Utah
Chromogenic print, available in 16 x 20” and 30 x 40”*